



SUITABLE FOR

Midwest 252

Midwest 552

GrainVac 1026

GrainVac 1026A

GrainVac 1026B

GrainVac 2100

GrainVac 2100D

GrainVac 2500

GrainVac 2500D

GrainVac 2700

GrainVac 2700D

GrainVac 3700

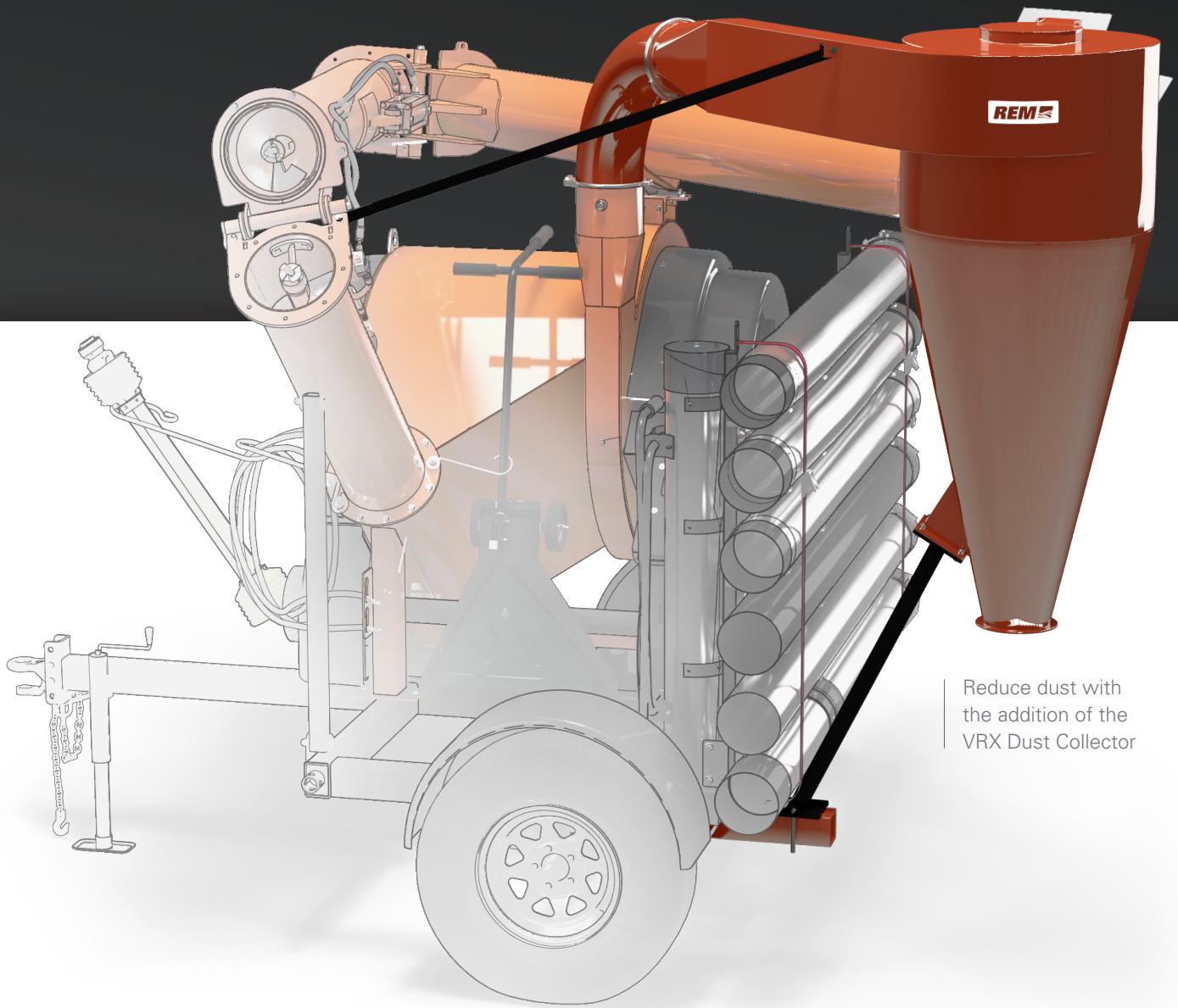
GrainVac 3700D

GrainVac VRX

Customize your REM GrainVac to suit your specific operation or simply expand your capabilities. You will find everything you need, right here.

GrainVac Options & Accessories

Dust Collecting



Reduce dust with
the addition of the
VRX Dust Collector

Dust Collecting

Don't let a little dust get in your way of moving grain when and wherever you need. REM's Dust Collectors are easy to attach and give you flexibility to collect or direct the debris.

Dust Collector for VRX

PART # **45-113094**



Hose & Accessories

REM GrainVacs come equipped with more standard hose than any others. Together with the telescoping inlet and the standing floor sweep, the standard package cleans up grain within a 49' radius from the base of the machine. When you need to reach beyond that distance, you need options that suit your set-up. To achieve best capacity at any distance, cover as much as you can with straight or smooth pieces like aluminum pipes and elbows, and then add flexible portions like the stainless steel flex hoses and the Bendahose where needed. Also see Ball Joints to add 40° of rotation to your hose set-up.

ALUMINUM PIPE

Aluminum pipe is the best option for moving grain over any distance. Aluminum pipe provides the least resistance and allows your system to maintain optimum performance.



7" x 4½' with ends	PART #	38-105259
7" x 7½' with ends	PART #	38-105260
7" x 10' with ends	PART #	38-104312
8" x 5' with ends	PART #	55-111081
8" x 8' with ends	PART #	55-111079
8" x 10' with ends	PART #	38-110657

FLEX PIPE

Stainless Steel Flex hoses provide some flexibility while keeping your capacity high. A must-have for expanding your reach any significant distance.



6" x 6' steel with ends	PART #	20-101442
6" x 6' steel without ends	PART #	P3422-06-0001
7" x 2½' stainless steel without ends	PART #	P3422-07-0002
7" x 7' stainless steel without ends	PART #	P3422-07-0001
7" x 2½' stainless steel	PART #	38-105143
7" x 7' stainless steel	PART #	38-104112
8" x 2½' stainless steel	PART #	38-111569
8" x 7' stainless steel	PART #	38-110535

BENDAHOSE

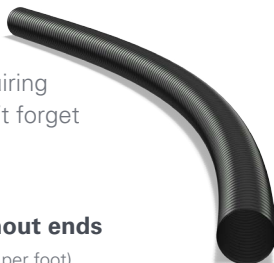
Bendahose is specifically designed to give you that extra little reach you always wanted along with flexibility.



7" x 4' Bendahose	PART #	38-112190
8" x 4' Bendahose	PART #	55-112193

HEAVY RUBBER HOSE

For special applications requiring a narrow, flexible hose. Don't forget your ends and transitions.



4" heavy rubber hose without ends	PART #	P3420-04-0003 (sold per foot)
-----------------------------------	--------	-------------------------------

BASKETWEAVES

Basketweaves are your most durable clean-up hose, with a little more weight and less flexibility than the urethane options.



7" x 7' basketweave hose without ends	PART #	P3420-07-0039
---------------------------------------	--------	---------------

7" x 8' basketweave hose with ends	PART #	38-110954
------------------------------------	--------	-----------

7" x 12.5' basketweave hose without ends	PART #	P3420-07-0018
--	--------	---------------

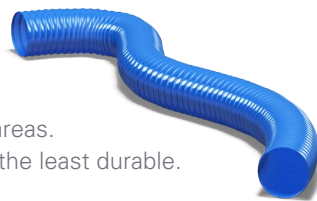
8" x 7' basketweave hose without ends	PART #	P3420-08-0080
---------------------------------------	--------	---------------

8" x 8' basketweave hose with ends	PART #	38-111393
------------------------------------	--------	-----------

Hose & Accessories

DURATHANE HOSE

Durathane hose is the best option when maximum flexibility is required over short areas. Durathane offers the most flexibility but is the least durable.



6" x 12' Durathane hose without ends PART # **P3420-06-0012**

7" x 8' Durathane hose without ends PART # **38-112180**

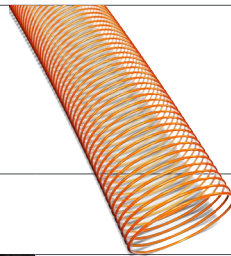
7" x 12.5' Durathane hose without ends PART # **38-112179**

7" x 25' Durathane hose without ends PART # **P3420-07-0042**

7" x 7' Polyurethane hose without ends

PART # **P3420-07-0001**

This light-weight clean-up hose provides good flexibility and capacity.



7" x 12½' Polyurethane hose without ends

PART # **P3420-07-0002**

Hose cover (black)

PART # **P3420-07-0045** (sold per foot)

If you love to use that lightweight hose but want it to last longer, wrap it in this nylon cover. Use 8" tighteners (6190-00-0128) to fasten.



ELBOWS

Steel elbows get you around corners without compromising your soft hoses, allowing material to flow as smoothly and quickly as possible. Use them with hoses to extend handling reach or to redirect exhaust.

8" 45° elbow kit

PART # **55-112771**

7" 45° elbow kit

PART # **38-107211**

8" 45° exhaust elbow

PART # **55-111121**

8" 90° elbow kit

PART # **55-112729**

8" 90° exhaust elbow

PART # **55-111206**

7" 90° elbow kit

PART # **38-107210**

8" x 11" exhaust adapter

PART # **55-111207**



TRANSITIONS

Don't be limited by your hose diameter. Transition to suit yourself between 4, 6, 7 and 8 inch sizes.

4" male to 6" male

PART # **20-101341**

4" male to 7" male

PART # **38-107498**

6" male to 7" female

PART # **38-104690**

7" male to 8" female

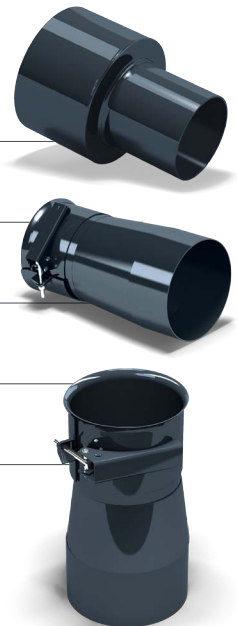
PART # **38-107474**

7" male to 6" female

PART # **38-103897**

8" male to 7" female

PART # **38-110650**



HOSE ENDS

4" male hose end

PART # **07-100821**

6" male hose end

PART # **20-101286**

7" male hose end*

PART # **38-103856**

8" male hose end*

PART # **38-110537**

* Requires 8" Hose Tightener (6190-00-0128).

7" female hose end for aluminum pipe only

PART # **P5195-01-7003**

8" female hose end for aluminum pipe only

PART # **55-112660**

6" female hose end

PART # **20-101427**

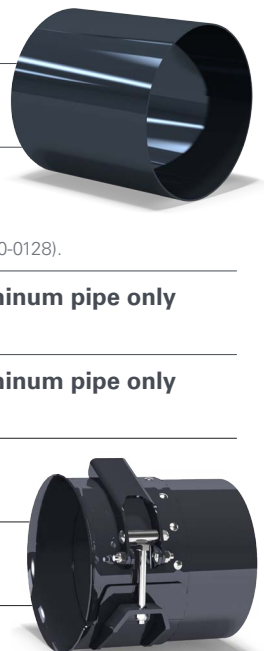
7" female hose end*

PART # **38-111291**

8" female hose end*

PART # **55-112581**

* Requires 8" Hose Tightener (6190-00-0128).



Nozzles & Sweeps

NOZZLES

7" clean-up nozzle with wheels

PART # **38-108401**



7" aluminum bin load-out nozzle

PART # **38-108923**

8" aluminum bin load-out nozzle

PART # **55-111828**

Use the bin load out nozzle when you want to get maximum efficiency when loading out of a full bin.



SWEEPS

Use the floor sweep to clean up the bin floor in one magical swoop. This nozzle allows you to get maximum efficiency when cleaning the bottom of a bin.

7" floor sweep optimizer

PART # **38-112491**

8" floor sweep optimizer

PART # **38-112494**

8" floor sweep*

PART # **38-110676**

7" floor sweep*

PART # **38-108959**

* 7" and 8" Floor Sweeps now include Optimizers

6" floor sweep

PART # **38-111044**

Floor sweep handles kit

PART # **38-110798**



CLAMPS

Clamps work best when sitting on top - not dragging beneath the hoses.

8" pull ring/clamp

PART # **P2391-00-0002**

8" clamp rubber seal

PART # **P2391-00-0004**

8" hose tightener*

PART # **P6190-00-0128**

* Required for 8" Female Hose End (55-112581) and 8" Male Hose End (38-110537). See Hose Ends above.

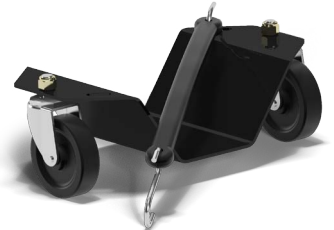


MISCELLANEOUS

Hose caddy

PART # **38-112204**

Dragging your hoses across a floor can be a heavy chore in some cases. Simply attach the hose caddy to the bottom of your hose and it will glide effortlessly across the floor.



7" - 3' to 6' telescoping tubes

PART # **38-104966**

8" - 2' to 3' telescoping tube

PART # **55-111104**

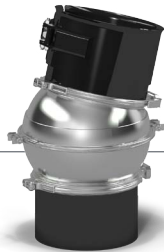
Specialties

Specialties

Add a ball joint wherever it makes sense and move around more freely with 40° of rotation.

8" rotating ball joint

PART # **55-112194**

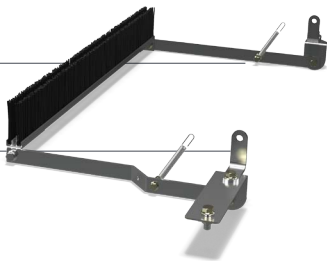


Drum brush kit for 3700

PART # **55-111222**

Drum brush kit for 552-2700

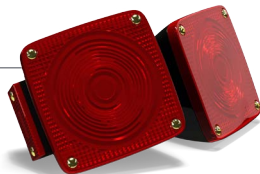
PART # **38-104551**



7" Bend-A-Spin

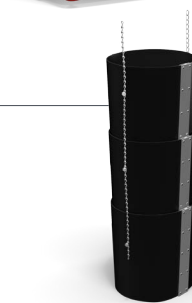
PART # **38-113030**

The Bend-A-Spin is a handy little combo that sets up the rest of your hoses to move in any direction.



VRX transport light kit

PART # **45-113093**



End spout

PART # **38-108988**



Air throttle kit

PART # **38-112798**

Can be adapted onto 2700 model machines. Reduces horsepower requirement and improves grain flow when moving lighter grains.

Re-Direct Your Exhaust

If you are looking to blow your dust along the ground instead of up into the air, the exhaust hose kits are for you. You can direct the dust in between the bins, keeping it low to the ground and away from you. For the optimal angle to redirect exhaust away from your GrainVac, order:

PARTS

VRX/2700 3700

8" 45° exhaust elbow

PART # **55-111121**

Two
(2)

One
(1)

8" clamp rubber seal

PART # **2391-00-0004**

Three
(3)

Two
(2)

8" pull ring/clamp

PART # **2391-00-0002**

Three
(3)

Two
(2)

8" x 11" exhaust adapter

PART # **55-111207**

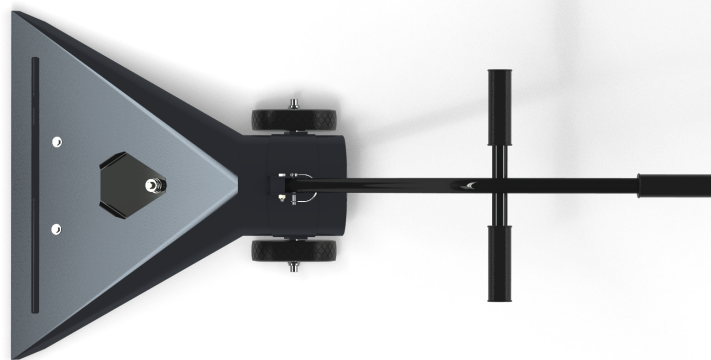
One
(1)

One
(1)



Getting the Best Out of Your REM GrainVac

Even a rookie can get top performance out of a REM GrainVac using these basic operation tips from the experts.



SHORT

Position the GrainVac as close to the source of the material as possible. Keep the length of piping short. The shorter the distance, the less piping friction and the greater the GrainVac capacity.

SMOOTH

Smooth pipes (interior walls) reduce resistance to air and grain movement. Where possible, use aluminum pipes first, then stainless steel flex pipes. Last of all use soft hose (for cleanup only) as this convenient lightweight hose creates more friction.

STRAIGHT

A ninety degree bend in the piping is the equivalent of adding twenty feet or more of straight piping. Reduce bends in the piping as much as possible, and keep the grain moving straight.

SLOPE

Lay out the piping as straight as possible over the length of run. "Hills and Valleys" in piping creates resistance to material flow. Grain does not move uphill easily, so remember to minimize the slopes.

SEAL

Air leaks in the GrainVac reduce capacity at the nozzle end of the pipe. Keep all neoprene foam seals (on the auger flanges, body doors and ports) in good condition. Keep the auger clean-out door and hose clamps adjusted snug in order to ensure a good air seal.

SUCTION

Grain moves only when air moves (no flow, no go). For older models you may be required to retract the hose end or nozzle slightly from the grain pile, meter the grain into the nozzle, or pull the nozzle air slide open to ensure no loss of suction. If your vac is equipped with an air throttle, know how to use it to adapt to your grain handling situation.

SPEED

REM GrainVacs are designed to run at top capacity when the PTO is at maximum speed of 1000 rpm. Using REM's standard tachometer/hour meter, you will always know your GrainVac speed.

SWEEP

Don't work so hard. Once you are in the bin use the light aluminum floor sweep. First, draw down the large piles. Then, in a pattern of semicircular "sweeps" across the floor, add hose lengths as required to increase your sweeping diameter. With the REM GrainVac you will make every job a clean sweep.

SPARKLE

To ensure good airflow keep the blower blades, inlet, exhaust piping, flighting and drum screen clean and free of buildup. Remove debris and perform maintenance as described in your operator's manual.





REM 

Box 1750
Swift Current, Saskatchewan
Canada S9H 4J8

877.667.7421
sales@batco-rem.com
grainvac.com

AGI 
AG GROWTH INTERNATIONAL